

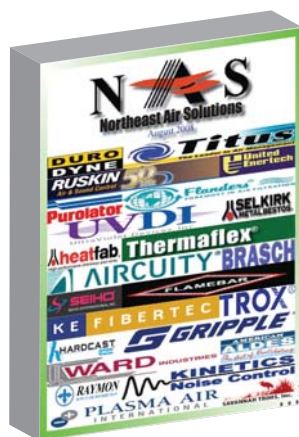
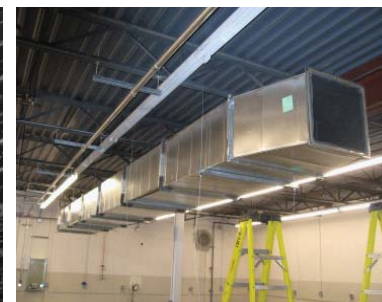
Northeast Air Solutions  
HVAC Products & Air Systems

# THE TITAN SPIN

Below are some of the pictures of things contractors have bought since using **Gripple** to hang Rectangular duct



Gripple has introduced a new hanger specifically for hanging strut. The pictures below show how easy the Gripple hanger makes installation of rectangular duct compared to using threaded rod. If you would like to save time and **\$\$Money\$\$** please contact us and let us help you use GRIPPLE.



Haven't received your August 08 NAS Warehouse Stock catalog? Ask your sales person to bring you a copy!

Ruskin Fire & Smoke Damper Seminar only 27 Days away! Reservation deadline: August 18th. Ask us how to reserve a seat!

165 Wood Road,  
Braintree, MA 02184  
Ph: 781-535-6800  
Fax: 781-535-6836  
E: bluchner@nas-hvac.com

3 Lopez Rd,  
Wilmington, MA 01887  
Ph: 978-988-2000

10A Morse Drive,  
Essex Junction, VT 05452  
Ph: 802-879-0442

**GRIPPLE**  
<http://www.gripple.com>

**NAS**  
<http://www.nas-hvac.com>